



## **LEP Progress Report**

*An update on the progress of New South Wales Councils  
with their Standard Local Environmental Plans*

**August 2010**



Published August 2010

Produced by The Planning Boardroom  
[www.theplanningboardroom.net](http://www.theplanningboardroom.net)

Author: Eli Gescheit

© **The Planning Boardroom 2010**

**Disclaimer:** Information provided is intended to be a guideline, not planning or legal advice. While every reasonable effort has been made to ensure that this report is correct at the time of publication. The Planning Boardroom takes no responsibility for any inaccurate information.

## **Executive Summary**

A recent survey conducted by KPMG found Sydney to be the worst planned city in Australia. This is no surprise to anyone.

Over the past few years the Department of Planning has been comparable to a factory in its delivery of planning reforms. One of these reform programs was the standardisation of all Council's Local Environmental Plans (LEPs) across New South Wales (NSW).

As part of this reform, Councils were requested in 2006 to update their planning controls to new a template, used as a blueprint to prepare new LEPs. This report provides an update on Council's progress made with their new LEPs.

All 152 Councils in NSW were surveyed on their progress, and the results have been produced in this unique report. To my knowledge such a report has not been produced, which makes the release of this report even more exclusive.

In my first job at an urban planning consultancy, I paid a regular visit to the Department of Planning to check their planning control maps for projects I was working on. The state of some of the maps was shocking and some were even illegible. With the new LEPs all the planning control maps will employ standard formatting so they can be easily interpreted.

As an urban planner currently working in a local Council in Sydney's eastern suburbs, I often come across property owners who are looking to improve the liveability and increase the value of their properties. This report is designed to provide valuable information for owners, consultants, developers and Councils.

I would like to take this opportunity to thank those Councils which assisted by providing updates on the progress made with their new LEPs. Considering this is the first report published by The Planning Boardroom I envisage it will be widely used as an essential resource. I look forward to providing more reports and features to the website in the future.

Eli Gescheit

Founding Director  
The Planning Boardroom

## **The Planning Boardroom**

### **Mission Statement**

The Planning Boardroom website is the key portal for discussions on urban planning, property development and architecture. The website provides the most comprehensive information on the latest issues and policies influencing the build environment.

A boardroom is the essential venue for discussions, sharing information and collaboration. This website has been developed to form a similar environment from the comfort of your computer.

### **Features**

Articles- articles on the latest issues which influence the built environment on topics ranging from architecture, infrastructure, property development, real estate and urban planning

Boardroom Brief- a regular email newsletter dedicated to keeping you informed on the latest articles and news on the website

Fact Sheets- a range of fact sheets designed to assist you in your work or for general knowledge

Industry Events- view Australian and international events

Affordable Housing Portal- your one stop shop for links to government and professional organisations, and also published reports on this important issue

Links- government departments and professional organisations, relevant websites, university courses and other useful websites

Meaningful Messages- get inspired by famous quotes every time you visit the website. A section dedicated to providing a random selection of quotes from pioneers in society, including legends in architecture and urban planning.

### **Enquiries and Advertising Opportunities**

Contact Eli Gescheit at [eli@theplanningboardroom.net](mailto:eli@theplanningboardroom.net)

Visit [www.theplanningboardroom.net](http://www.theplanningboardroom.net)



## Table of Contents

Overview .....	6
The Standard LEP .....	6
Gateway Process.....	6
LEP Tracking System.....	6
LEP Maps .....	6
Priority Councils .....	7
Process to Make a LEP .....	7
Purpose .....	8
Knowledge is Power .....	8
Benefits.....	8
Methodology .....	8
Analysis .....	9
Key Findings .....	9
LEP Progress Report .....	10
Summary .....	19

## **Overview**

### **The Standard LEP**

On 31 March 2006 the NSW Department of Planning began the largest reform to the planning system in over 30 years by establishing the Standard Local Environmental Plan (LEP). The Standard LEP established the template for all Councils to use in the preparation of their new LEPs. In legal terms it is referred to as the Standard Instrument. Essentially Councils were forced to adopt this new template as a means to simplify zoning, definitions, maps and other planning controls.

Prior to this decision, the planning system was very perplexing as there were more than 5,500 local planning instruments, 3,100 zones and 1,700 definitions. With the Standard LEP there will only be around 200 LEPs, 50 zones and 300 definitions. Clearly these changes will improve the planning system.

### **Gateway Process**

Once a LEP has been prepared it is submitted to the Minister for Planning for review. The Gateway Process was introduced in July 2009 which enables a LEP to be reviewed early on to check whether it is viable. Following the Minister's approval, changes may be recommended, feedback from other State and Federal departments are sought and the required timeframes are established. Once the LEP has been approved by the Minister it is published on the NSW Legislation website. The date on which the LEP is published is when it comes into effect.

There are a number of advantages associated with this process;

- Progress is made available to the public
- Feedback from the NSW Department of Planning is required at an early stage
- Provides an assessment system tailored for each Council according to their individual LEPs.

### **LEP Tracking System**

Once a LEP has been submitted to the Minister it is made available online which provides the public with the progress made. The information published includes the date on which the LEP was lodged, the date of determination by the Department of Planning, written documentation and maps. This online tracking system is different to this present report because it does not provide estimated timeframes or any other additional details associated with Council's progress made with their LEPs. The website is available at;

<http://leptracking.planning.nsw.gov.au/Default.aspx>

### **LEP Maps**

In an effort to standardise all LEP maps across the State, the Department of Planning set fairly rigid requirements. This measure simplifies the maps to ensure the format is generic so that each Council produces the same map elements for the required maps.

The types of maps include;

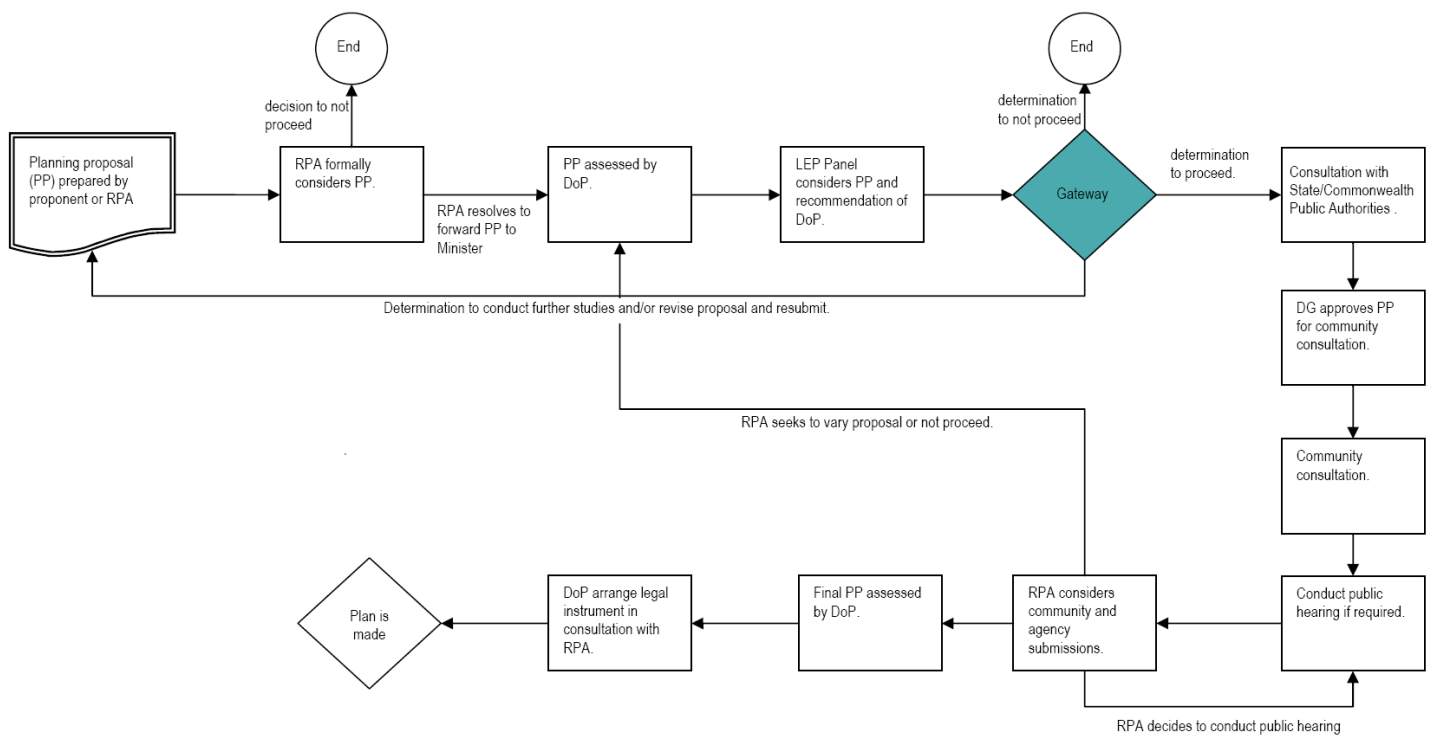
- Zoning
- Height
- Floor Space Ratio
- Heritage
- Local maps such as Acid sulfate and Foreshore building line

### Priority Councils

All councils received a letter in early August 2009 from the Minister for Planning and the Minister for Local Government identifying the priority Councils throughout the State. These Councils were selected to ensure the delivery of their LEPs is completed by June 2011. 67 Councils were chosen and the Department of Planning has ensured that the Councils which missed out will still receive some level of support.

### Process to Make a LEP

Below is a flowchart prepared by the Department of Planning which outlines the complex process in preparing a LEP. In addition to Council’s primary functions, one can appreciate the lengthy timeframes required.



Source: Department of Planning

**Terms**  
 PP- Planning Proposal  
 RPA- Relevant Planning Authority (e.g. Council)  
 DoP- Department of Planning  
 DG- Director General

## **Purpose**

### **Knowledge is Power**

Many property owners or investors are interested in maximising the development potential of their property. Whether it is adding another storey to a semi, or subdividing land to create townhouses, some knowledge of the relevant planning controls applicable to the property is imperative.

A home is often the most expensive investment a person makes in his or her life. The value of property is not just based on the monetary benefit; it is the development potential which will benefit the owner's lifestyle requirements.

The fundamental controls are zoning, floor space ratio (FSR) and the height limit. If someone knows how these controls apply to their property, they will have a fairly good idea on what they can do with their property. I consider these planning controls to be the 'nuts and bolts' for property owners and buyers and I always provide these to customers for residential and commercial properties.

If explained correctly, any lay person can understand the importance of knowing the zoning, FSR or height limits. In my role as Duty Planner at a local Council, I often provide guidance on how these planning controls apply to a particular property. This information is provided over the counter, whereas a private town planning consultancy could offer this advice for thousands of dollars.

### **Benefits**

The LEP Progress Monitor is an essential resource in understanding the progress made by Councils in revising their planning controls. The benefits to various stakeholders has been summarised below.

**Property owners and buyers-** identify key planning controls which they can utilise to renovate or redevelop the property.

**Urban planners, architects and other consultants-** the updates can be used to provide guidance to clients who own properties and in preparing a Development Application

**Developers-** to inform them of changes to planning controls which could affect their properties.

**Councils-** can check how other councils are progressing with their new LEPs in their locality.

### **Methodology**

Due to time constraints I decided that the most suitable method to collect updates from Councils was by email. All 152 Councils in NSW were originally emailed in May with background information about the preparation of the report together with relevant questions. The email also specified that the report would be available for free through The Planning Boardroom website in electronic version.

Up to three emails were sent to Councils to encourage them to provide updates on their new LEPs. A handful of Councils were phoned for updates and it took around three months to collect updates from most Councils. Only 15 Councils out of 152 did not respond.

## **Analysis**

A total of 137 Councils responded to the research, or 90% of all Councils in NSW. I consider this response rate to be exceptional given that most Councils are normally too busy to respond to questionnaires.

In the research it was found that at least three Councils had not commenced preparation on their new LEPs and the regional Councils appear not to be in a hurry to prepare their new LEPs. The reasons could be influenced by the lack of funding, resources and their focus to provide other services to residents which they believe are a higher priority.

Some Councils seem to be frustrated with regard to the number of changes made by the Department of Planning to the LEP preparation requirements. These changes have caused extended timeframes to prepare LEPs and unnecessary pressure.

When asked about the anticipated date of completing their LEPs, Councils could often only provide an estimate as the timing was in the hands of the Department of Planning. One Council staff member stated that they were irritated because the Department of Planning kept 'moving the goalposts' as a result of changes made to the LEP requirements. This paints a clear picture to outsiders of the tough job faced by Councils as things can change many times before they can finalise their LEP.

Out of 152 Councils only two expressed in writing that they refused to respond. Unfortunately they did not wish to provide the reason behind their decisions. 15 Councils did not respond to the survey.

Overall the majority of Councils are well on their way to preparing the new LEPs to meet the specified timeframes issued by the Department of Planning.

## **Key Findings**

- 137 Councils out of a total of 152 provided an update, while there was no information sourced from 15 Councils. Therefore 90% of Councils in NSW assisted with the research.
- Overall 16 Councils have had their new LEPs published, which also includes secondary LEPs, such as Town Centres, e.g. Burwood LEP (Burwood Town Centre) 2010.
- Only two Councils which refused to participate in this research and expressed this through email.
- Seven Councils are waiting for their LEPs to be approved by the Minister for Planning and subsequent publishing on the NSW Legislation website.

- The majority of Councils have commenced work on their new LEP which consists of preparing strategic studies, which will be used to assist with the new LEP and preparing Draft LEPs for public exhibition.
- At least three Councils have not commenced preparation of their new LEP.

## LEP Progress Report

The core of this report lies in the table below which lists the responses from Councils. All the information has been sourced from Council responses. The dates in the table correspond to the date on which the response was received by the particular Council. Therefore it can be assumed that the update is accurate from the date stated. In some cases, the date corresponds to the date on which the NSW Legislation website was checked. If you would like more information on Council's progress it is advisable to contact Council directly.

The table provides additional information which includes background information for some Council's progress, websites and Council reports.

### Key Terms

DoP- Department of Planning

LEP- Local Environmental Plan

Published- date on which the LEP comes into effect

**Note:** All efforts were made to ensure the information is accurate and up to date.

Council	Date	Progress	Additional Information
Albury	21 June	LEP expected to be published within the next few months.	
Armidale Dumaresq	2 June	Due to be completed in 2011.	The New England Development Strategy and the Armidale Bulky Goods Retail and Industrial Lands Study are guiding Council to develop the LEP.
Ashfield	18 June	Anticipated to be completed late 2011/early 2012.	Draft Urban Strategy adopted by Council on 15 June 2010.
Auburn	7 July	Draft LEP was adopted on 12 May 2010.	
Ballina	4 June	Draft LEP public exhibition closed on 4 June 2010. Publishing of LEP is imminent.	<a href="http://newlep.ballina.nsw.gov.au">http://newlep.ballina.nsw.gov.au</a>
Balranald	10 July	Balranald LEP published on 9 July 2010.	
Bankstown	28 June	Council is currently working on Local Area Plans and is a non-priority Council.	<a href="http://www.bankstown.nsw.gov.au/City-Planning/default.aspx">http://www.bankstown.nsw.gov.au/City-Planning/default.aspx</a>
Bathurst	25 May	Due to be completed by June 2011.	Urban Strategy adopted by Council and the Rural Strategy is yet to be endorsed by DoP.
Bega Valley	18 June	The Draft LEP will be exhibited within the next few months.	
Bellingen	2 June	Draft LEP adopted by Council on 24 March 2010. Anticipate LEP to be published early August 2010.	Shire-wide Consolidated Development Control Plan on public exhibition from 3 June 2010 to 2 July 2010.
Berrigan Shire	2 June	Council's consultant is currently preparing a strategic land use plan for as the first stage for the	Not listed by the DoP as a priority Council.

LEP Progress Report

<b>Council</b>	<b>Date</b>	<b>Progress</b>	<b>Additional Information</b>
		new LEP.	
Blacktown	27 May	Commenced work on the new LEP and supporting strategies. Due to be finalised by 2011.	
Bland		No response.	
Blayney	22 June	Currently preparing the new LEP and completion is due by 2011.	
Blue Mountains	25 May	DoP has supported Council to update its secondary LEP 1991 instead.	Not listed by the DoP as a priority Council.
Bogan	24 June	A consultant is in process of preparing the new LEP.	
Bombala	20 May	Work has commenced and publish date is due by December 2010.	
Boorowa	25 May	Anticipated to be published by end of 2010.	
Botany Bay	24 June	Public exhibition of new LEP is expected by end of 2010. Timeframe for publish date is between March and July 2011.	
Bourke	1 June	Completion date is by June 2011.	
Brewarrina		No response.	
Broken Hill	22 June	Work has commenced on the new LEP, although the publish date is unknown.	
Burwood	17 May	Burwood LEP (Burwood Town Centre) 2010 published on 10 May 2010. The Comprehensive LEP is due to be adopted by 2012.	
Byron	17 May	Significant amount of work has been completed for the LEP. Expected to be finalised within 12 months.	
Cabonne	22 June	Currently finalising the Land Use Strategies and working on the Land Use Matrix for the new LEP. Draft LEP to be prepared in 2011 and the objective is to publish the LEP by June 2012.	
Camden	17 May	Publish date of LEP is imminent.	Camden Local Environmental Plan (Camden Lakeside) 2009 published on 22 May 2009
Campbelltown	25 May	Preparing at least nine strategic planning studies which will be used to assist prepare the new LEP. Not a priority Council and advice on publish date has not been provided by DoP.	
City of Canada Bay	4 June	New comprehensive LEP will be finalised in 2011.	The City of Canada Bay LEP 2008 was adopted in September 2007. This LEP consolidated Concord PSO 1969 and Drummoyne LEP 1986.
Canterbury	17 May	Work has commenced on the new LEP. Council was removed from the March 2011 completion date by the DoP and publishing	

<b>Council</b>	<b>Date</b>	<b>Progress</b>	<b>Additional Information</b>
		is anticipated to be after this date.	
Carrathool	18 June	Publish date is unknown.	
Central Darling	18 June	LEP to be published in 2011.	
Cessnock	23 June	Adoption and publish date is expected by end of 2010.	
Clarence Valley	24 June	Currently reviewing submissions from the exhibition of the Draft LEP. Results will be reported to Council by August 2010. Publish timeframe of LEP anticipated at the end of 2010 or beginning of 2011.	
Cobar	24 June	Work has not commenced and there is no immediate timeframe. It could take two years to publish the new LEP.	
Coffs Harbour	17 May	Publishing of LEP is expected in June 2011.	A City Plan is being prepared in conjunction with the Cities Taskforce. This is separate to the new LEP, however the findings will assist with the new LEP
Conargo	24 June	Preparing Rural Land Use Strategy at the moment and there is no timeframe known. There is at least 12 months of work to be done.	
Coolamon	1 July	Draft LEP on exhibition until 27 August 2010.	
Cooma-Monaro	24 June	Work has commenced however there is no timeframe known yet.	
Coonamble	21 June	Council rejected its Land Use Strategy and will review it prior to the LEP being completed. Anticipates LEP to be published by mid to late 2011.	
Cootamundra	25 May	Currently being prepared and publish date is expected early 2011.	
Corowa	19 May	Work commenced in 2007 and publish date is expected by December 2011.	
Cowra	1 July	Completion of Land Use Strategy due by end of July 2010. New LEP to be published early 2011.	
Deniliquin	21 June	Council is not on the DoP's priority list and therefore the publish date is unknown.	
Dubbo	20 May	Adoption by Council is anticipated at the end of 2010. Publish date by DoP is unknown.	
Dungog	18 May	Council has recently completed a land use strategy that will be utilised to prepare the LEP. They expect to start work on the LEP at the end of 2010 and it could take over a year to finalise	
Eurobodalla	29 June	Draft LEP is with the DoP and	

LEP Progress Report

<b>Council</b>	<b>Date</b>	<b>Progress</b>	<b>Additional Information</b>
		following this there will be a second exhibition for comment. Timeframe for publishing is unknown.	
Fairfield	29 June	Public exhibition to commence end of 2010 and publishing due mid to late 2011.	
Forbes	18 May	The Draft LEP is expected to be submitted to the DoP in June.	
Gilgandra	29 June	Completed strategy work and in the process of drafting the LEP. Public exhibition end of 2010 and publishing in 2011.	
Glen Innes Severn	1 June	Council has been classified as a non-priority Council. They are waiting for DoP to approve their land use strategy and consultants are preparing the Draft LEP.	
Gloucester	11 June	Gloucester LEP 2010 published on 11 June 2010.	
Gosford	4 June	The Draft Gosford LEP 2009 finished a 3 month public exhibition period on 5 May 2010.	Over 1,500 submissions were received for the Draft LEP.
Goulburn Mulwaree	1 June	The Goulburn Mulwaree LEP 2009 was published on 20 February 2009.	
Great Lakes	21 May	Council is not a priority Council and has revised its strategic work program to focus on additional studies to assist with the new LEP. It is unlikely that Council will exhibit the new LEP before early to mid 2012.	
Greater Hume	30 June	Draft exhibited by end of 2010. No publish timeframe yet.	
Greater Taree	25 June	Greater Taree LEP published on 25 June 2010.	Council adopted the Draft LEP in October 2009.
Griffith	18 June	Currently preparing a Land Use Strategy to assist with preparation of the new LEP. This strategy is expected to be completed by the end of 2010 and publishment of new LEP by end of 2011.	
Gundagai	1 June	The Draft LEP is proposed to be exhibited in mid June and published by December 2010.	
Gunnedah	18 June	Council has commenced work on the new LEP, but publish timeframe is unknown.	
Guyra	1 June	LEP to be published in 2011.	Council has a desire to have a regional LEP covering Armidale Dumaresq, Guyra, Uralla and Walcha Council areas. There needs to be amendments made to the legislation if the Councils proceed. There is also a review of the four Councils and an amalgamation could be a possibility which will probably result in further delays.

<b>Council</b>	<b>Date</b>	<b>Progress</b>	<b>Additional Information</b>
Gwydir	4 July	Aim to complete new LEP by 2011.	
Harden	17 May	The Harden LEP 2010 is with the DoP seeking approval to place it on public exhibition. The timeframe for publishing is unknown.	
Hawkesbury	30 June	Preparing report to Council and aim to have the new LEP published by end of 2010.	
Hay	1 June	Publish date expected in 2012.	
Hills	3 June	Commenced work in 2007 and aim to exhibit the Draft LEP in 2010.	<a href="http://www.thehills.nsw.gov.au/Planning-the-Hills.html">http://www.thehills.nsw.gov.au/Planning-the-Hills.html</a>
Holroyd	8 June	Exhibition of the Draft LEP is expected to commence in mid-July 2010. Council anticipates publishing of LEP around February-March 2011.	
Hornsby	18 May	Council foresees the public exhibition to commence at the end of 2010. The DoP has indicated that they would like the LEP to be published by June 2011.	<a href="http://www.hornsby.nsw.gov.au/planningdevelopment/index.cfm?NavigationID=2318">http://www.hornsby.nsw.gov.au/planningdevelopment/index.cfm?NavigationID=2318</a>
Hunters Hill	30 June	Hunters Hill Local Environmental Plan (Gladesville Village Centre) 2010 published on 30 June 2010. Hunters Hill Village LEP adopted in 2009 and waiting for Gladesville LEP to be published. Council will then commence work on new LEP. Timeframe is unknown as it is a non-priority Council.	
Hurstville	30 June	Draft LEP currently on exhibition until 16 July.	
Inverell	7 June	New LEP is expected to be published by late 2011 or early 2012.	
Jerilderie	17 May	DoP has designated this Council as a non-priority which means the expected publish date is unknown.	
Junee	18 June	Work has not commenced on the new LEP and it is expected to be finalised end of 2012.	
Kempsey	21 June	Publishing of LEP is anticipated by June 2011.	
Kiama	2 June	Draft LEP was adopted by Council in May 2010. Aiming for publishing in 2011.	
Kogarah	1 June	Preparing Land Use Strategy which will be used to prepare the new LEP. Council has until 2011 to complete the new LEP.	
Ku-ring-gai	18 June	Background studies are currently being prepared for the new LEP.	Report to Council's Planning Committee on 12 May 2010-

<b>Council</b>	<b>Date</b>	<b>Progress</b>	<b>Additional Information</b>
		Planning to have draft LEP on exhibition by mid 2011.	<a href="http://www.kmc.nsw.gov.au/www/html/3763-planningcommittee-2010.asp">http://www.kmc.nsw.gov.au/www/html/3763-planningcommittee-2010.asp</a> Ku-ring-gai LEP (Town Centres) 2010 was published on 25 May 2010.
Kyogle	18 June	Work has commenced and Council expects the new LEP to be published by July 2011.	
Lachlan	21 May	Council is has almost completed a major amendment to its current LEP. Following this, it will begin work on the new LEP.	
Lake Macquarie	17 May	Draft LEP due to be exhibited in September 2010 and published in September 2011.	
Lane Cove	27 May	Lane Cove LEP 2009 published on 19 February 2010.	
Leeton	19 May	Commencement of new LEP has not taken place, although a heritage study will be prepared shortly, which will assist in the new LEP.	
Leichhardt	1 June	Council has been requested by DoP to have new LEP published by mid 2011.	
Lismore	17 May	Draft LEP is on exhibition until 29 July 2010 and publish date is expected early 2011.	
City of Lithgow	25 June	Currently preparing Land Use Strategy. Adoption of Draft LEP by Council due October/November 2011 and published by March/April 2012.	
Liverpool	2 June	Liverpool LEP 2008 was published on 6 May 2008.	
Liverpool Plains	2 June	Council expects to adopt the new LEP in August 2010 with publishing to follow a few months later.	
Lockhart		No response.	
Maitland	6 July	Draft LEP has been adopted by Council and the exhibition period is to be determined by DoP. March 2011 is the expected publishing date.	
Manly	1 June	Adopted by Council anticipated in August 2010 and publishing date dependant on DoP timeframes at that time.	Council is currently seeking to resolving policy and mapping issues with the DoP prior to formal submission of the new LEP.
Marrickville	18 June	New LEP expected to be published between December 2010 and March 2011.	<a href="http://www.marrickville.nsw.gov.au/planninganddevelopment/planningreview.htm">http://www.marrickville.nsw.gov.au/planninganddevelopment/planningreview.htm</a>
Mid-Western		No response.	
Moree Plains	6 July	Council has recently given the approval by DoP to exhibit the Draft LEP. Publish date is anticipated by end of 2010 or beginning of 2011.	
Mosman	28 May	Following public exhibition in	<a href="http://www.mosmanlep.net">http://www.mosmanlep.net</a>

LEP Progress Report

<b>Council</b>	<b>Date</b>	<b>Progress</b>	<b>Additional Information</b>
		December 2009, Council aims to have the new LEP published by December 2010.	
Murray	17 May	Currently preparing submission to the DoP and published by June 2011.	
Murrumbidgee		No response.	
Muswellbrook	6 July	Muswellbrook LEP 2009 published on 30 May 2010	
Nambucca	30 July	Nambucca LEP 2010 published on 30 July 2010.	
Narrabri	18 June	June 2011 is the anticipated date for publishing.	The new LEP will roll over three current LEP's into one document. Employment Lands Strategy is currently being completed and Growth Management Strategy has been finalised.
Narrandera		No response.	
Narromine		No response.	
Newcastle	19 July	Published LEP due in July 2011.	
North Sydney	19 May	Draft LEP is currently with the DoP for review.	
Oberon	18 June	Land Use Study has been endorsed by Council and DoP. Meeting with DoP has been scheduled in July 2010 to discuss progress.	
Orange	6 July	Aiming to exhibit the Draft LEP within the next two months.	
Palerang	21 June	Public exhibition is expected end of 2010/early 2011 and the new LEP is to be published mid 2011.	
Parkes		No response.	
Parramatta	21 June	Draft LEP completed public exhibition on 7 May 2010. Council aims to have new LEP published in 2011.	
Penrith	15 June	Council adopted Stage 1 of its LEP on 30 November 2009 and is currently awaiting to be published. The DoP indicated this will happen on or before 30 June 2010. Council is currently preparing its Planning Proposal for Stage 2. Council anticipates that the exhibition of the Proposal and LEP will take place early in 2011.	Council is preparing its LEP in 2 stages. The first stage covers Penrith's rural lands, industrial lands and St Mary's Town Centre. The second stage will cover all remaining land (predominantly urban)
Pittwater	1 June	Council is preparing a Land Use Planning Strategy to assist the new LEP. This document will be reported to Council in the coming months with a view to placing the document on exhibition for public comment.	
Port Macquarie-Hastings	17 May	Council has just completed exhibition of the new LEP. Publishing of LEP is anticipated	

## LEP Progress Report

Council	Date	Progress	Additional Information
		by end of 2010.	
Port Stephens	18 June	Council intends to present the Draft LEP at a Council meeting by the end of 2010.	
Queanbeyan	21 June	Timeframe for publishing is between 2010 and 2011.	
Randwick	7 June	Draft LEP to be published by March 2010.	
Richmond Valley		No response.	
Rockdale	1 June	Draft LEP to be presented at Council meeting on 7 July 2010. Publishing expected by July 2011.	
Ryde	30 June	Ryde LEP 2010 published on 30 June 2010.	
Shellharbour		No response.	
Shoalhaven	3 June	Public exhibition of Draft LEP is expected mid to late 2010.	
Singleton		No response.	
Snowy River	7 July	Work is underway with strategic plans and Council expects the LEP to be published by late 2012.	
Strathfield	24 May	DoP has scheduled the LEP to be published by March 2011.	
Sutherland	8 June	Draft LEP is proposed to be submitted to DoP by the end of 2010.	
City of Sydney	21 June	Adoption by Council is expected by end of 2010. Public exhibition and publishing timeframes are unknown.	<a href="http://www.cityofsydney.nsw.gov.au/Development/CityPlan/Default.asp">http://www.cityofsydney.nsw.gov.au/Development/CityPlan/Default.asp</a>
Tamworth	31 May	Publishing is anticipated by end of 2010.	Five current LEPs will be consolidated to create the new Tamworth Regional LEP 2009.
Temora	18 June	Temora Local Environmental Plan 2010 published on 11 June 2010.	
Tenterfield		No response.	
Tumbarumba	30 June	Tumbarumba LEP 2010 published on 30 June 2010.	
Tumut	1 June	Shire-wide LEP publishing is scheduled for December 2012.	Council has prepared a Planning Proposal submission to DoP for a conversion LEP to be finalised this year. The new Shire-wide LEP will incorporate the Brindabella area currently under the Yarrowlumla LEP 2002 and several changes identified in strategic planning processes.
Tweed	6 July	Exhibition of Draft LEP finished on 30 April 2010. Publish date could be expected by mid 2011. Re-exhibition of Draft LEP is to be decided with the DoP over the next two months.	
Upper Hunter		No response.	
Upper Lachlan	10 July	Upper Lachlan LEP 2010	

LEP Progress Report

Council	Date	Progress	Additional Information
		published on 9 July 2010. Draft LEP adopted by Council on 28 February 2010. Submission of Draft LEP to DoP on 31 March 2010.	
Uralla	6 July	Work has commenced on the new LEP.	
Urana	22 June	Council has undertaken preliminary data collection due to lack of funding from DoP. A conversion LEP is considered a suitable option.	
Wagga Wagga	16 July	Wagga Wagga LEP 2010 published on 16 July 2010.	Council's Planning Panel adopted the Draft LEP on 17 February 2010. <a href="http://www.wagga.nsw.gov.au/www/html/3133-draft-wagga-wagga-local-environmental-plan-2008.asp">http://www.wagga.nsw.gov.au/www/html/3133-draft-wagga-wagga-local-environmental-plan-2008.asp</a>
Wakool	18 May	Publishing due late 2010 or early 2011.	
Walcha	2 July	Aim to publish the new LEP by 2011.	Walcha Council in conjunction with Armidale Dumaresq, Guyra and Uralla Council are working together on the LEP.
Walgett	1 June	It could take between 2 to 2.5 years to publish the new LEP.	
Warren		No response.	
Warringah	19 May	Council adopted Draft LEP on 8 June 2010. Publish date is likely late 2010.	
Warrumbungle	17 May	Currently preparing Draft Growth Management Strategy and is due to be completed by June 2011.	
Waverley	31 May	DoP has not nominated Council as a priority, however public exhibition of Draft LEP is due early to mid 2011.	Waverley LEP (Bondi Junction Centre) 2010 adopted on 7 May 2010.
Weddin		No response.	
Wellington	1 June	Currently preparing Draft Landuse Strategy (Urban and Rural).	
Wentworth	4 June	Draft LEP is expected to be adopted by Council in July 2010 and published by February 2011.	
Willoughby	17 May	Public exhibition for the Draft LEP finished on 20 May 2010.	<a href="http://www.willoughby.nsw.gov.au/Draft-Willoughby-Local-Environmental-Plan-2009.html">http://www.willoughby.nsw.gov.au/Draft-Willoughby-Local-Environmental-Plan-2009.html</a>
Wingecarribee	16 June	Wingecarribee LEP 2010 published on 16 June 2010.	
Wollondilly	1 June	Council adopted Draft LEP on 17 May 2010. Publishing date is unknown.	
Wollongong	19 May	Wollongong LEP 2009 published on 26 February 2010. Wollongong LEP (West Dapto) 2010 published on 5 May 2010.	
Woollahra	6 July	Publishing of new LEP is estimated to be in the second half of 2011.	

Council	Date	Progress	Additional Information
Wyong	28 June	Classified as a priority Council and the new LEP is to be published by June 2011.	Council report dated 23 June 2010: <a href="http://www.wyong.nsw.gov.au/about/Council_meeting_230610_Amended%20Report%20%20Item%203%202%20Comprehensive%20Local%20Environmental%20Plan%20Project%20Review%20Project.pdf">http://www.wyong.nsw.gov.au/about/Council_meeting_230610_Amended%20Report%20%20Item%203%202%20Comprehensive%20Local%20Environmental%20Plan%20Project%20Review%20Project.pdf</a>
Yass Valley	2 June	Council is currently completing studies which are informing proposed rezonings. Adoption by Council is due in December 2010, while publishing is expected in second half of 2011.	
Young	18 June	Draft LEP adopted by Council on 13 April 2010. Council submitted LEP with DoP and publish date is imminent.	

## Summary

Over the past 30 years the New South Wales planning system has produced over 5,500 local planning instruments, 3,100 zones and 1,700 definitions. With the introduction of the new Standard LEPs there will be a combined total of around 200 LEPs, 50 zones and 300 definitions. This massive reform orchestrated by the Department of Planning is highly commendable. Even though the goalposts may have changed a few times, the final outcome will result in the best planning system the state has seen in 30 years.

Considering the uniqueness of this report, the response rate by Councils is excellent. All 137 Councils who participated in this report are acknowledged for their contribution.

This report has provided a quality update on the progress of the majority of NSW Councils. Equipped with the information presented, it is anticipated that this will assist many stakeholders in understanding how the new planning controls adopted in the new LEPs will benefit their properties.

Remember to visit The Planning Boardroom at; [www.theplanningboardroom.net](http://www.theplanningboardroom.net)

Here you will find an essential forum and resource on urban planning, architecture and property development issues. Stay updated by subscribing to the free regular Boardroom Brief email newsletter at; [www.theplanningboardroom.net/subscribe](http://www.theplanningboardroom.net/subscribe)

For general enquiries or to discuss sponsorship opportunities please contact Eli Gescheit at [eli@theplanningboardroom.net](mailto:eli@theplanningboardroom.net)

